



**MICROCRYSTALLINE ARKANSAS NOVACULITE**  
 PO Box 1238, HOT SPRINGS, AR 71902-1238 USA  
 501-623-8893 / FAX 501-623-5113

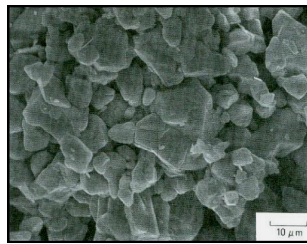
**malvern**  
 MINERALS COMPANY

Data Sheet

# 1250 Novakup®

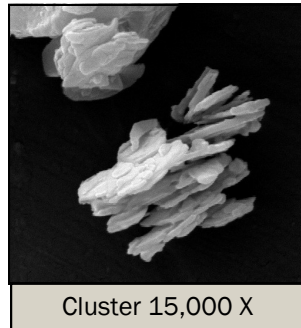
Platy Quartz

Properties	(Typical)	
Specific Gravity	2.65	
Index of Refraction	1.550	
Color (Dry)	White	
Color (Wet)	Gray-Tan	
Oil Adsorption (Spatula)	Rub Out Method	17-20%
Particle Shape	1-7 microns	Platy
Particle Shape	Over 7 microns	Clusters
pH	6.0-7.8	
Acid Number	0(-0-18)	
Thermal Stability (in its phase)	Absolute Zero to 573° C	
Specific Heat (Mean between 0-200° C)	.192 Cal/g/C°	
Surface Modified with Silanes (e.g., Epoxy, Amino, Vinyl, HMDS and more)		
Hardness	Mohs 7	
Moisture (Finished Product) 110° C 3 Hours	0.0%	
Loss on Ignition (Typical) 1000° C 30 Minutes	0.20%	
Loose Packed	50 lbs/Ft <sup>3</sup>	
Dense Packed	80 lbs/Ft <sup>3</sup>	



Cluster 14,000 X

SEM Images



Cluster 15,000 X

Micro Diameter	U.S. Series Number	Percent Finer Than*	Fineness of Dispersion
44µ	325	99-100	Hegman Grind 3 - 4
30µ	475	99	
20µ	625	94	
15µ	950	92	
10µ	1250	69	
Average Particle Size (Range) Fisher 7µ to 14µ			
*These values are averages			

Chemical Analysis (Typical)	
SiO <sub>2</sub>	99.49%
Fe <sub>2</sub> O <sub>3</sub>	.039%
Al <sub>2</sub> O <sub>3</sub>	.102%
TiO <sub>2</sub>	.015%
CaO	.014%
MgO	.021%

Typical Applications
Protective Coatings
Marine Coatings
Thermoset Resins
High Power Bushings & Insulators
Petrochemical Tank Linings
Primer Coatings

**General Information** 1250 Novakup® is a surface modified or silane treated lamellar quartz. This is 100% passing 44 microns. 1250 Novakup® is preferred for its' added mechanical strength and barrier protection within chemical and corrosion resistant applications. Novakup® is the only silane treated, lamellar quartz offered within the industry. When you must guarantee your protective or marine coating, choose Novakup®.

Novakup® grades include: 200, 325, 1250, Daper, L-337 Novakup®.

Please visit us at: [www.malvernminerals.com](http://www.malvernminerals.com) or e-mail: [novacite@malvernminerals.com](mailto:novacite@malvernminerals.com)

Novacite® is a naturally occurring product. The chart above indicates typical particle size distributions. Generally the top size can be controlled through classification machinery; however, sub-sieve distribution and relation above are impossible to predict with accuracy. The nature of fineness or coarseness varies with the character of the crude ore.

Information contained herein is intended only for evaluation by technically skilled persons, and is to be used by such persons at their own risk. Such information is believed to be reliable, but Malvern Minerals Co assumes no responsibility for results obtained or damages resulting from such use. Typical properties and chemical analyses are intended as examples and are not to be considered as substitutes for actual analyses in those situations where properties and chemical compositions are critical factors. Sales of Malvern Minerals Co products shall be independent and subject exclusively to the terms and conditions set forth in Malvern's order acknowledgement.